

SOFIA L/S CM5161



DESCRIPTION

Long Sleeve shirt, slim fit cut with front and back darts, left front pocket and strap with concealed buttons. Cuff with 2 buttons. Shapped bottom. Easy care.

COMPOSITION

65% polyester / 35% cotton, poplin, 130 gsm.

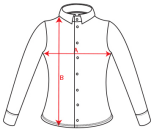
REMARKS

*Available man.

SIZES

Adults: S · M · L · XL · XXL / Kids:

SCHEME



QUANTITIES

Adults

Box	Pack
36 un.	1 un.

COLORS

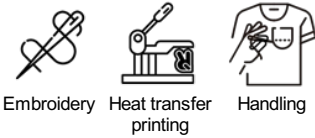


SIZES

Adults	S	M	L	XL	XXL
WIDTH (A)	45cm	48cm	51cm	54cm	57cm
HEIGHT (B)	63,5cm	64,5cm	65,5cm	66,5cm	67,5cm

*[Measured from the edge 1 cm below the sleeves / Measured from the highest point of the shoulder to the end of the garment]

PRINTING TECHNIQUES AVAILABLE



RELATED MODELS



SOFIA CM5061



OXFORD WOMAN CM5068



AIFOS CM5503



AIFOS L/S CM5504

The colors and measures contained in this sheet are rounded to the colors and sizes of our products. Due to continued work in product improvement and renovations of the same stock are subject to change or modification not reflected in this document. Claims based on the colors or sizes that are listed on this sheet will not be accepted. ROLY reserves the right to change without notice colors and measures regarding the products described in this data sheet.

