

WOMEN SWEAT DRESSES

## STDW163 - STELLA KICKER TIE AND DYE



### COLORS

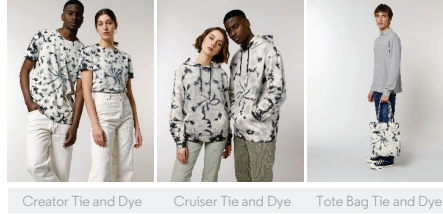


### The women's oversized tie and dye crew neck dress

#### Oversized

- Set-in sleeve
- 1x1 rib at neck collar, sleeve hem and bottom hem
- Inside herringbone back neck tape
- Self fabric half moon at back neck
- Sleeve hem and bottom hem with single needle topstitch
- Garment dyed product, each garment may vary in appearance, colour may bleed, follow our care label
- Read carefully print recommendations

#### Combo options



Shell : French Terry , 100% Cotton - Organic Ring Spun Combed , Garment washed , Garment dyed , 300 GSM

#### Printing Specifications

For suitable print techniques, please download our printing guide

#### Certifications & memberships

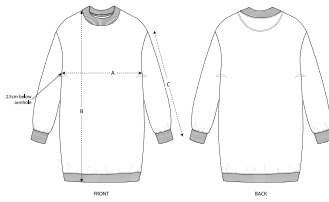


#### Wash Instructions

Wash and dry separately, colours bleeds, do not iron on print, wash and iron inside out.

This is a hand dyed item. Each garment varies in appearance and design. Each garment has a unique look. Colour effect may fade over time. Colour may transfer by rubbing onto light coloured materials. Use mild detergent which contains no bleach.





SIZES		XS	S	M	L	XL	XXL
A	Half Chest	58.5	61	64	67	70	73
B	Body Length	87	89	91	93	94	95
C	Sleeve Length	54	54	55	55.5	56	56

### PACKING

SIZES	XS	S	M	L	XL	XXL
PCS/BAG	5	5	5	5	5	5
PCS/BOX	20	20	20	20	20	20