



COLORS



UNISEX HOODIE SWEATSHIRTS STSU719 - CRUISER DENIM

The unisex denim hoodie sweatshirt

Medium Fit

- Set-in sleeve
- Double layered hood in self fabric
- Round drawcords in matching body colour with metal tipping
- Metal eyelets
- Single jersey back neck tape
- Self fabric half moon at back neck
- Single needle topstitch at neckline and along hood opening
- 1x1 rib at sleeve hem and bottom hem
- Armhole, sleeve hem and bottom hem with twin needle topstitch
- Kangaroo pocket at front
- Faded look on all seams due to garment washing
- Indigo yarn dyed product, each garment may vary in appearance, colour may bleed, follow our care label
- Read carefully print recommendations

Combo options



Stella Tracer Denim

Stanley Stepper Denim

Shell : French Terry , 85% Cotton - Organic Ring Spun Combed , 15% Polyester
- Recycled , Garment washed , Yarn Dyed , 300 GSM

Printing Specifications

For suitable print techniques, please download our printing guide

Certifications & memberships

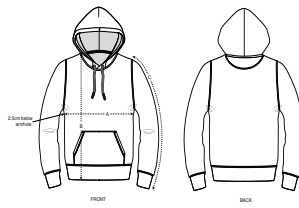


Wash Instructions

Wash and dry separately, colour bleeds, wash and iron inside out, do not iron on print. This garment is an indigo dyed item. Each garment may vary in appearance. Denim washed effect will become stronger over time. Colour may transfer by rubbing onto light coloured materials. Use mild detergent which contains no bleach.



STANLEY/STELLA



SIZES		XS	S	M	L	XL
A	Half Chest	49	51.5	54	57	60
B	Body Length	65	68	72	74	76
C	Sleeve Length	61.5	64	65.5	67	68.5

PACKING

SIZES	XS	S	M	L	XL
PCS/BAG	5	5	5	5	5
PCS/BOX	20	20	20	20	20